

# Civic Markers & other Follies



# Homestead Preserve Boarding Stables

Responsibilities: Design, Construction Docs,

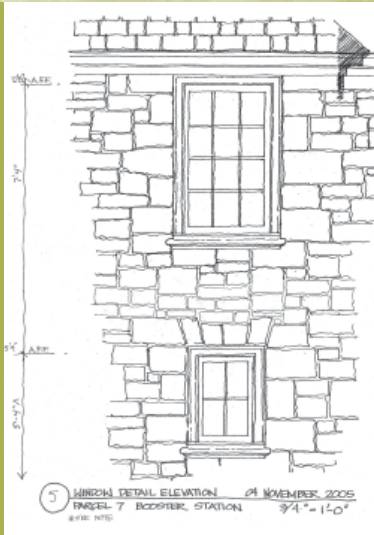
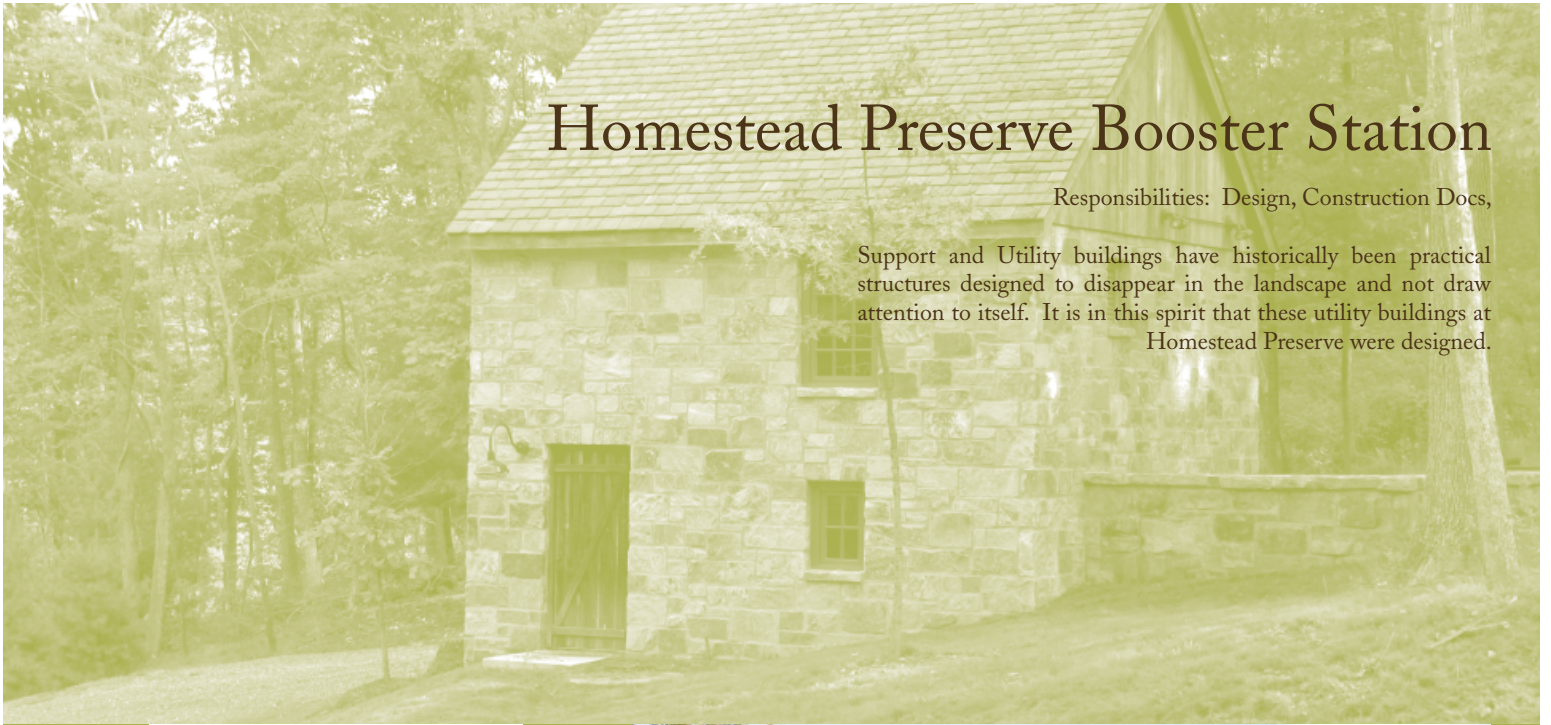
This plank barn has the warmth of a wood framed douglas fir interior, with the strength of steel structures. Constructed by Geobarns, Inc., the unique framing system is designed to employ much smaller structural members than usually required with standard framing, and was built with less than half of the construction waste typically associated with buildings of this size. Simple massing and eave details are the mark of indigenous barns in this part of Virginia, and the vertical plank siding give the barn a timeless feel that will patina over time.



# Homestead Preserve Booster Station

Responsibilities: Design, Construction Docs,

Support and Utility buildings have historically been practical structures designed to disappear in the landscape and not draw attention to itself. It is in this spirit that these utility buildings at Homestead Preserve were designed.



*existing building clad in chestnut reclaimed from a nearby fallen barn*



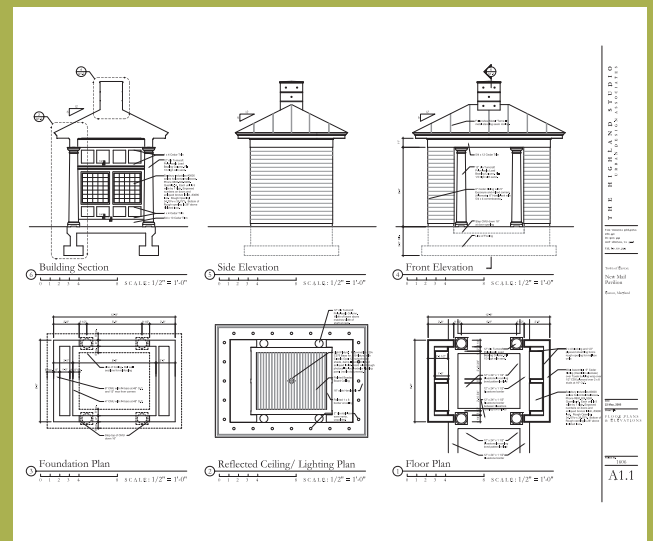
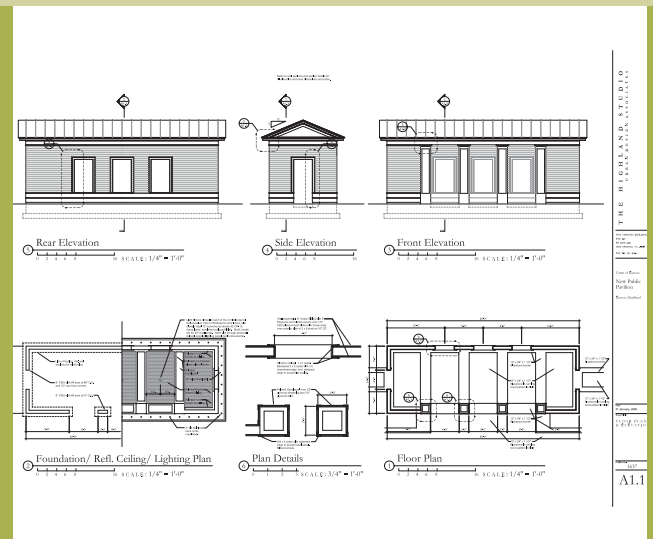
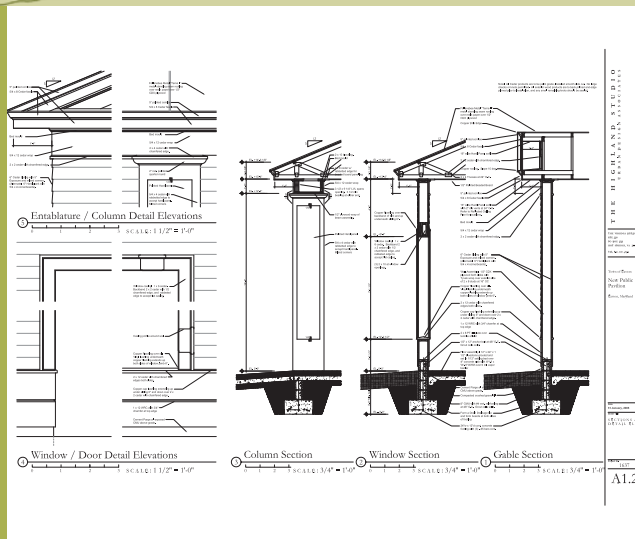
*water pump booster station clad in stone with chestnut soffits and gable ends*

# Easton Community Pavilion & Post Office

Responsibilities: Design, Construction Docs

These pavilions are prepared for a TND (traditional neighborhood development) in Easton Maryland. The local precedents include a victorian, colonial, and classical influences, and these pavilions are designed to complement the local vernacular tendencies.

image courtesy of urban design associates



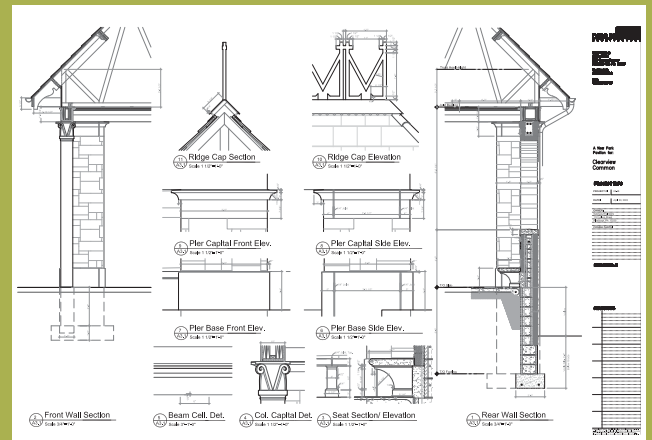
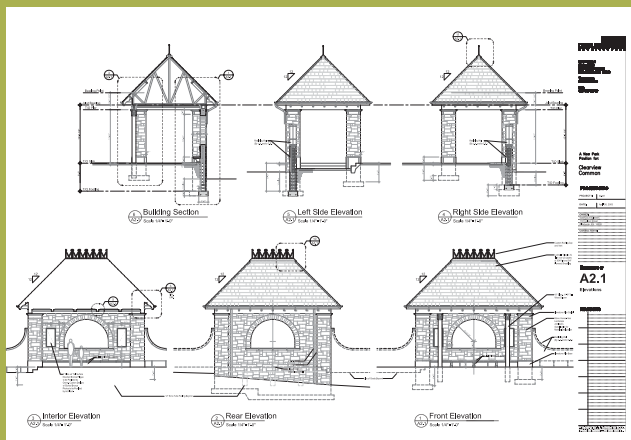
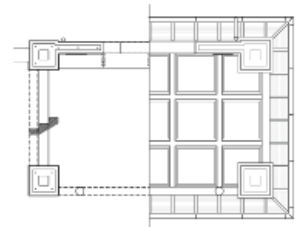
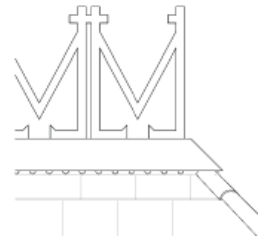
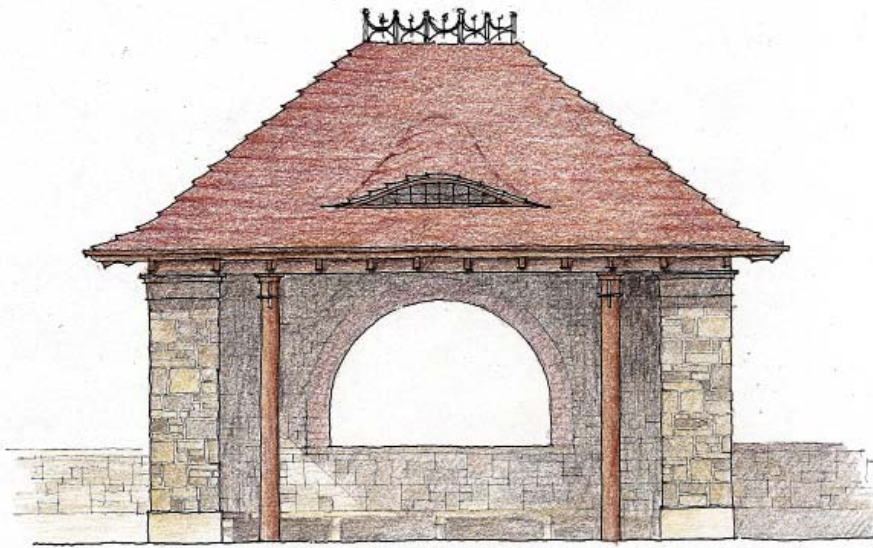
sketches and details above

# Clearview Commons

Responsibilities: Design, Construction Docs

This is a community pavilion for a community outside of Pittsburgh. The materials and detailing reflect the tudor and english romantic tendencies in this historic Pittsburgh neighborhood.

Image courtesy of urban design associates



*elevations, plans and details shown above, including a copper crennillation of the initials for Mount Lebanon*

