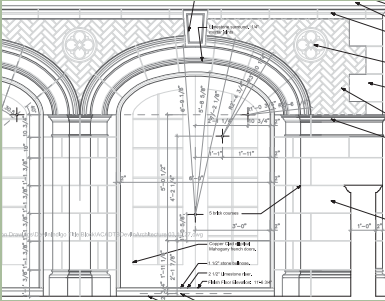


Residential Portfolio



Charlottesville Flat Apartment

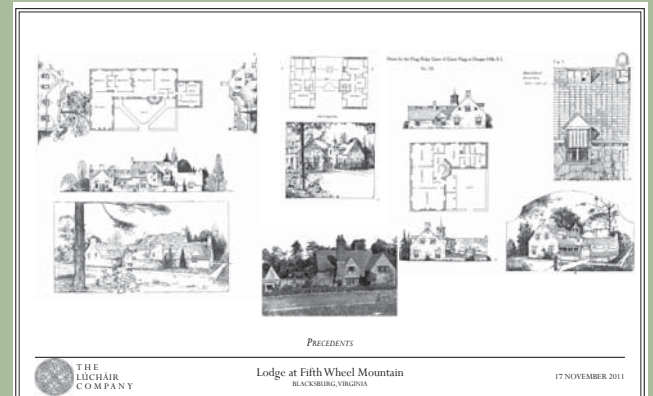
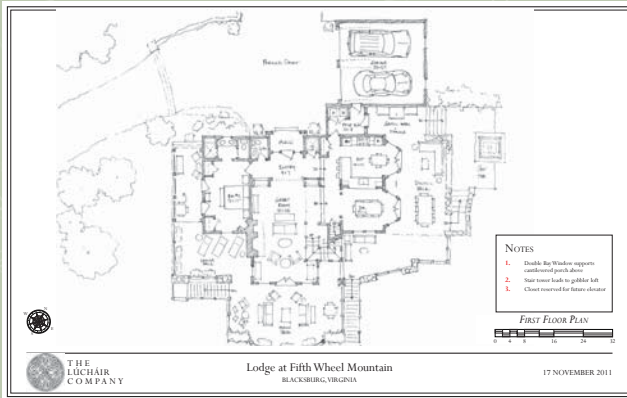
This careful renovation of an apartment flat in Charlottesville sought to accommodate the client's eclectic design tastes, whose furniture and artwork collection varied from Revolutionary war era to contemporary art and furniture. Understated and abstracted traditional design allows for a myriad of these styles to be on display in a manner that calls accents the furniture and art, and not the architecture.



Lodge at Fifth Wheel Mountain

This house is nestled high in the Blue Ridge Mountains with long valley views. The client, an avid turkey hunter who frequently hunts from a tree stand on this property, has an upper floor perch from which to spot wildlife and capture the long views. Outdoor living is emphasized with multilevel terraces around three sides of the home.

This project is still on the boards, but offers a good sense of what the design process holds for an intermediate level of design services. Design precedents are an integral part of the design process, and black and white sketches allow for quick and adaptable design studies.



Beckstoffers Mill Rehabilitation

Responsibilities: Project/ Design Architect for Master Planning, Building Design, Phase I Contract Documents & Const Admin.

This project involved the careful transformation of an historic millwork shop that had provided the building materials for hundreds of early 20th century homes in the Church Hill neighborhood of Richmond. This adaptive reuse into a mixed use community involved the transformation of existing stockyards, warehouses, and millwork shop into a center for senior housing, attached townhouses, apartment lofts, and small retail uses. The project is Earthcraft certified throughout. The first phase of the project converts the existing millwork shop into a mixture of market rate and affordable industrial feeling loft apartments totalling 22 units. The units reused much of the original lumber for shelving, cabinets, stair rails, and trim.

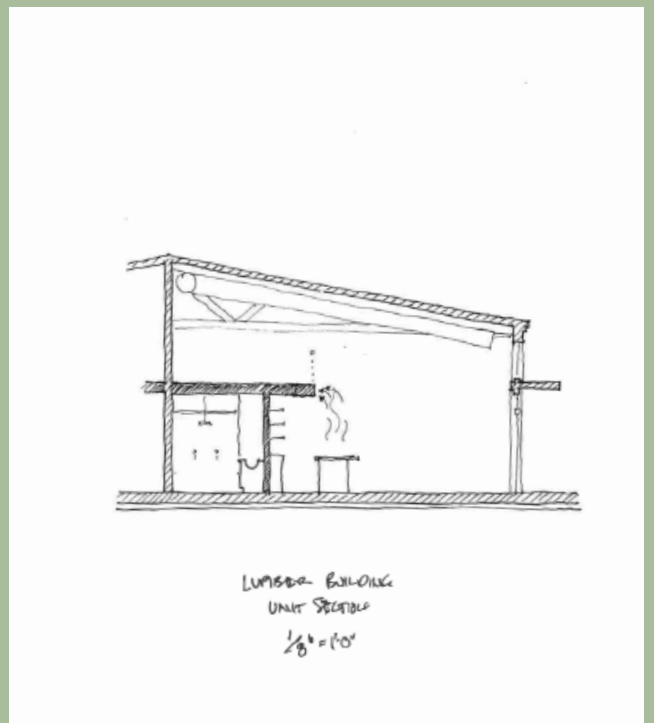
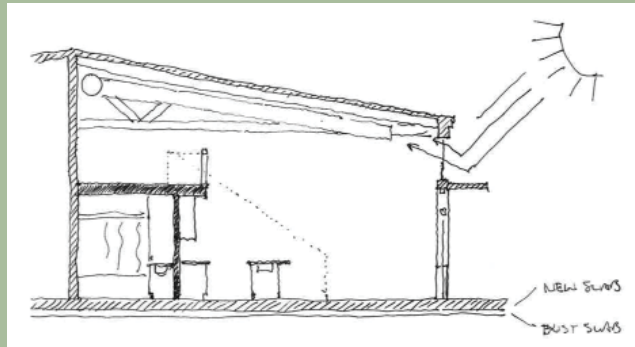


Beckstoffers Mill front elevation



master plan showing existing warehouses converted to lofts, new infill for townhouse fabric, and new retail

Beckstoffers Mill Rehabilitation

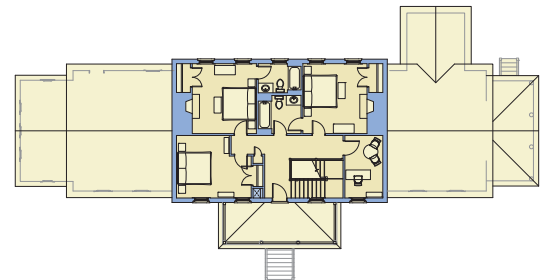
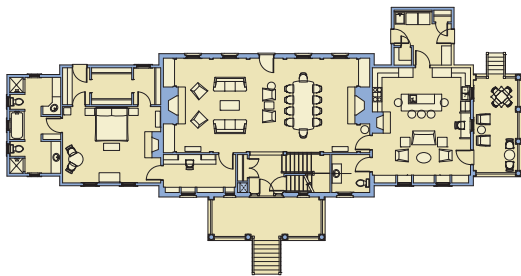


unit plan concepts and photos of completed units

Sheep Meadow House

Responsibilities: Design, Construction Docs, Interiors, CA

Located in the mountainside along a small clearing of woods, this home captures terrific views of Dunn's Gap through to West Virginia. The massing typifies the indigenous massing of Western Virginia farmhouses- a narrow chassis less than 28 feet deep that maximizes opportunities for light and ventilation, as well as providing a very light footprint on steep slope landscapes. The relaxed classical detailing bridges between the ornament typical of Virginia gentlemen farmers, and the more rigid classical detailing of the summer homes of the New York holiday folk that populated this valley during summers at the Homestead. Large porches encourage indoor/outdoor living and the side porch is designed to allow for future screened panels. A carriage house with apartment flat above is built into the hillside and frames a private rear garden.



top: floor plans, middle: views of Dunn's Gap, bottom: elevations



front elevation



garage apartment



bottom left: dining room, bottom right: living room, middle: bar

Warm Springs Farm

Responsibilities: Design, Construction Documents

Carefully nested atop Warm Springs Mountain, this large estate in Homestead Preserve is carefully situated at the edge of the woodlands overlooking the valley. The large program is broken into smaller components of 'additions' attached to main house, as well as separate structures on the homesite. The effect is that of a farm house that has grown over time to accommodate the needs of a growing family. The approach to the estate takes one across the front address then through a gentle gravel drive nestled very carefully into the steep slope of the hillside to minimize disturbance of grade and foliage. Although the massing of the house disappears into the hillside below the ridgeline, panoramic views are abundant in 3 directions.



top: front elevation, bottom: muted colors and sited at edge of meadow minimize impact



view across valley

Herdsmen Cottage

Responsibilities: Design, Construction Administration

The approach to design of the Herdsman's Cottage is to build on the simple, agrarian lifestyle that is part of the Homestead Dairy legacy in Warm Springs. The cottage features elegant but simple primitive furnishings, locally crafted pottery, quilts, and throw rugs that reflect the regional culture. Color plays an important role – butternut, terra cotta, deep forest greens, weathered milk painted cabinets – all combine to create a deep sense of living connected to the land and the life on the former dairy. The buildings form a compound around an expansive kitchen garden that features flowers, herbs, fruit trees, and a future well and cistern – all contributing to an enclosed, private world that reinforces the Herdsman's connection to the earth.



above right: barn, bottom right: main house, bottom left: views from front porch



heirloom herb garden



rear porch



above left: kitchen, above right: living room, bottom: master suite

Ascending Manor House

Roles: Design, Construction Documents, Partial Interiors, Construction Administration

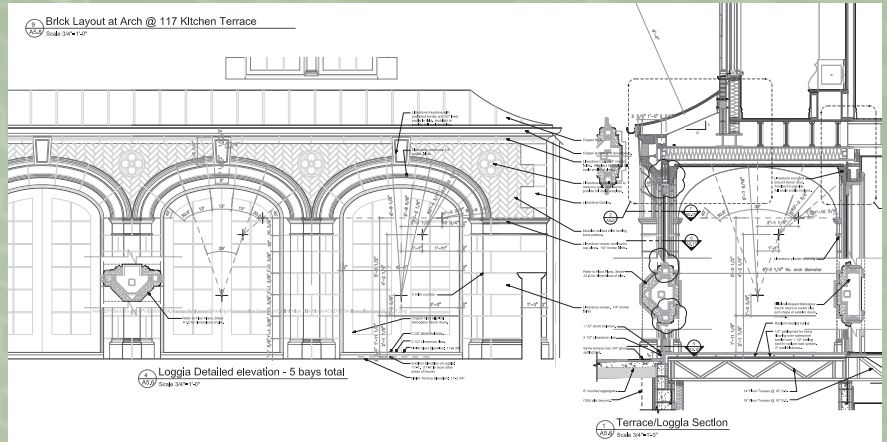
This home is situated in a historic neighborhood in Pittsburgh, and recalls the refined elegance of the English Manor architecture found so commonly during the industrial age western Pennsylvania. The large program is hidden in a restrained massing that carefully falls in line with the width and height of the neighborhood houses. The highest level of amenities possible are found throughout the home- copper doors and windows, limestone quoining, plaster tracery, wrought iron open elevator in the rear stair, and sixteen seat home theater in the basement.



view from the street



side garden



loggia details



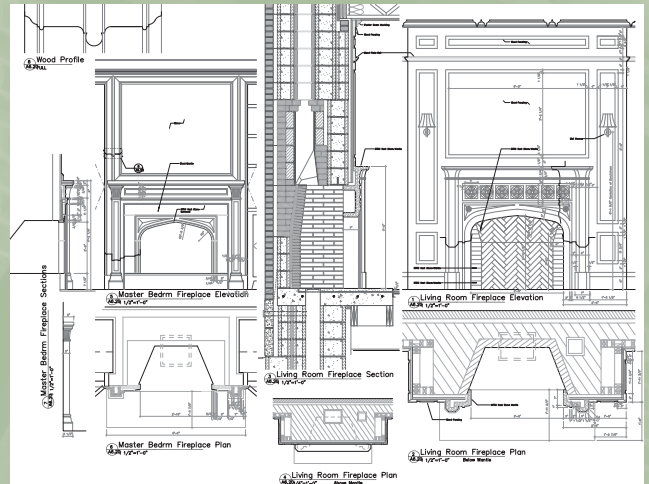
loggia at side garden



the massing aligns with similar homes in the neighborhood



limestone fireplace surround



fireplace details



living room



kitchen



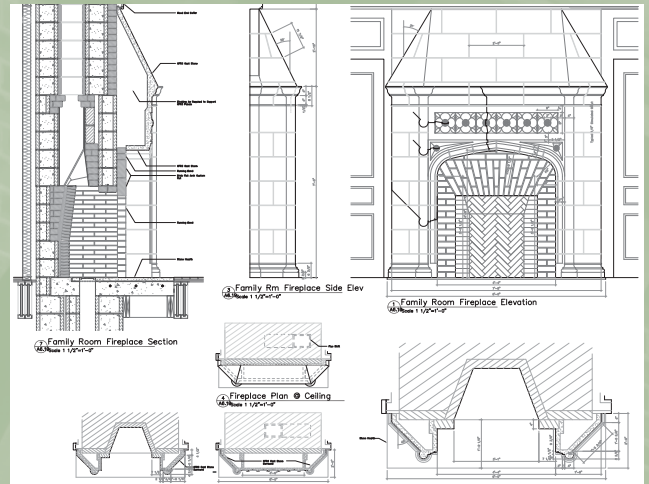
master bedroom



library



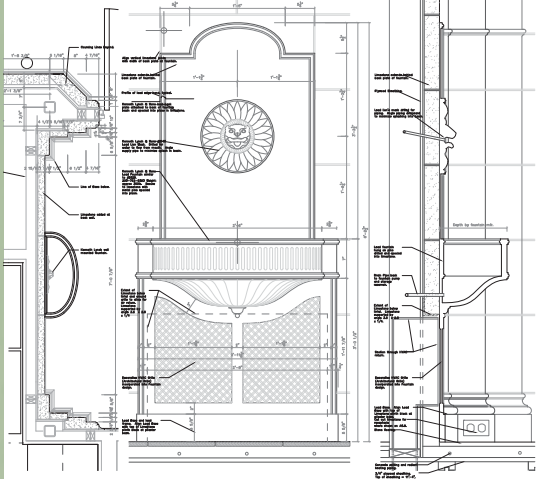
limestone fireplace tracery



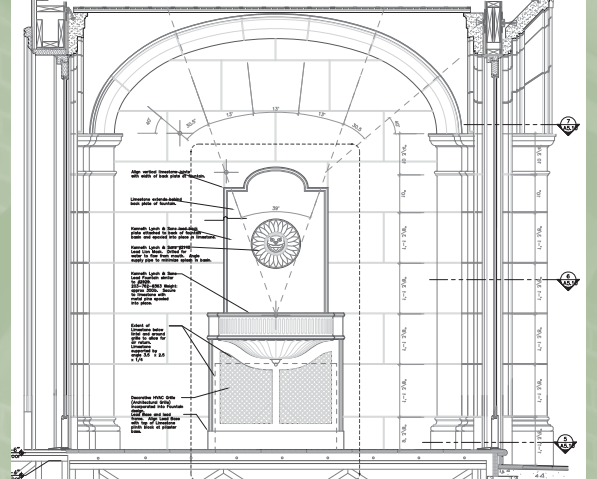
fireplace details



family room



fountain details



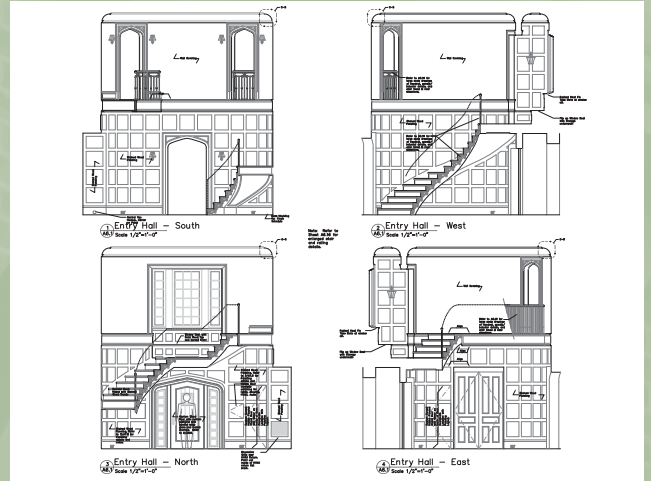
fountain details



loggia



art gallery loft above garage



foyer interior elevations



entry foyer

Erie Station Village

Responsibilities: Project Architect/Manager-Design Development, Construction Documents, Construction Administration

A collaborative effort between UDA and Devlin Architecture, Erie Station Village is a new 360 unit mixed-use, mixed-income neighborhood based on traditional neighborhood design principles. It is compact, pedestrian-friendly, and linked to amenities. Located off of a rural highway, Erie Station Village brings the intimacy and convenience of village life to the countryside alongside West Henrietta, New York. Erie Station Village features a mix of unique lofts, apartment houses and townhouses – all based on regional vernacular styles – built around an open space network that includes a four-acre pond, greens, trails, and a central meadow. A rebuilt farmers market and converted farmhouse create a link between the new neighborhood and West Henrietta.



Apartment Flats are modeled here an agricultural utilitarian massing



ERIE STATION VILLAGE - ROCHESTER, NY

townhouse units are modeled after local vernacular precedents

MATTHEW J FITZGERALD RA : LEED AP

Paradise Ridge House

Roles: Design, Construction Documents,



watercolor rendering

Paradise Ridge is settled on a gentle slope overlooking Deep Creek Lake in western Maryland. Massing is low, with the upper story built into the roof to minimize exposure from across the valley. The chassis is narrow at twenty eight feet, which allows for minimal grading and environmental impact. The narrow chassis also allows the soft forest lighting to penetrate deep into the home, and provides for ample cross ventilation. The exterior is an interesting play using soft stucco, and a more rustic stained rough plank siding.



bottom right: living room, above left: side elevation with views of the valley beyond

Deep Creek Houses



perspective sketch



perspective sketch



The homes on this page represent an assortment of other homes produced while at Detlin Architecture



relaxed massing and detailing that draws from Arts and Crafts and Far Eastern influences

Steinway House

Roles: Construction Documents, Construction Administration

Windsor Florida is a New Urban Community designed by renowned planners Duany Plater Zyberk. It draws its precedents from a variety of sources, most notably that of St. Augustine Florida and Charleston, South Carolina. The Steinway house draws heavily on these influences in the siting of houses at the lot line, use of courtyard gardens, narrow footprints to maximize natural light and ventilation. Heavy eaves shade the exterior walls, upper floor balconies provide a public presence at the street while still allowing a level of privacy for the bedrooms they serve.

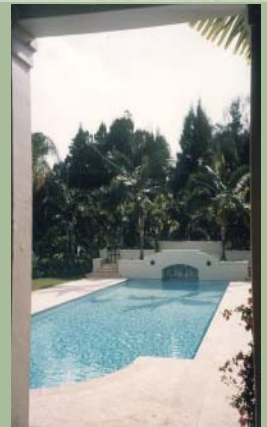


top left: guest house, bottom: front elevation

Crystal House

Roles: Construction Documents, Construction Administration

Windsor Florida is a New Urban Community designed by renowned planners Duany Plater Zyberk. It draws its precedents from a variety of sources, most notably that of St. Augustine Florida and Charleston, South Carolina. The Crystal house draws heavily on these influences in the siting of houses at the lot line, use of courtyard gardens, narrow footprints to maximize natural light and ventilation. Heavy eaves shade the exterior walls, upper floor balconies provide a public presence at the street while still allowing a level of privacy for the bedrooms they serve.



top: pool side elevation, bottom: golf course elevation

Silver Creek House

Roles: Construction Documents, Construction Administration

Windsor Florida is a New Urban Community designed by renowned planners Duany Plater Zyberk. It draws its precedents from a variety of sources, most notably that of St. Augustine Florida and Charleston, South Carolina. The Silver Creek house draws heavily on these influences in the siting of houses at the lot line, use of courtyard gardens, narrow footprints to maximize natural light and ventilation. Heavy eaves shade the exterior walls, upper floor balconies provide a public presence at the street while still allowing a level of privacy for the bedrooms they serve.



bottom left: corner street elevation, all other views: pool courtyard

